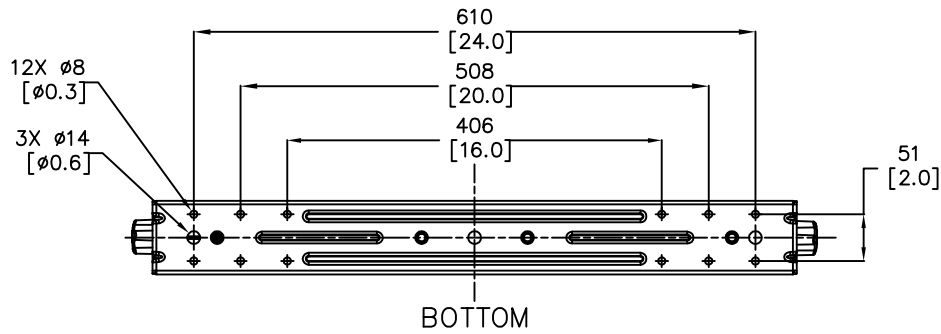
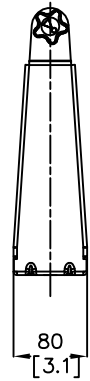
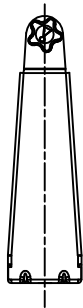
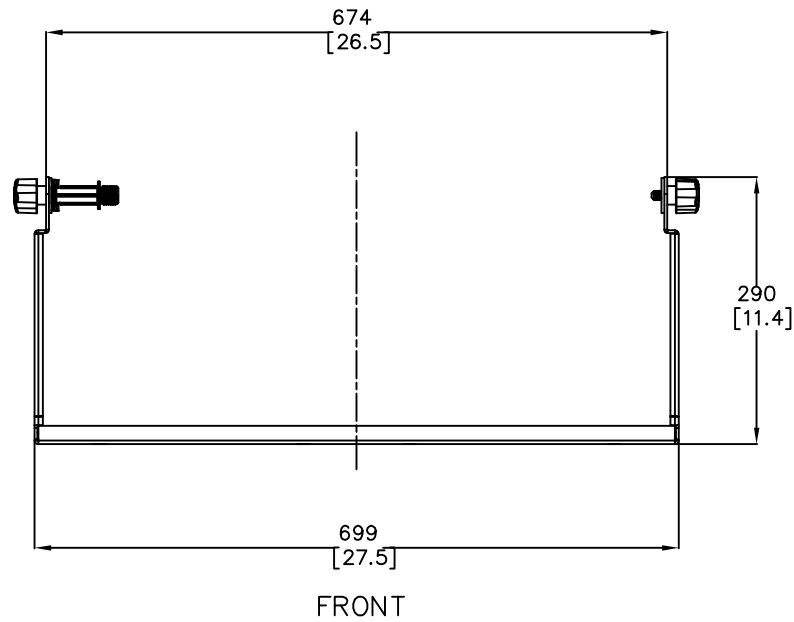
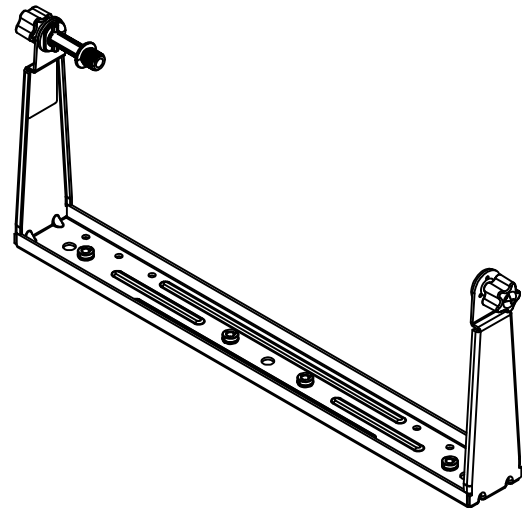
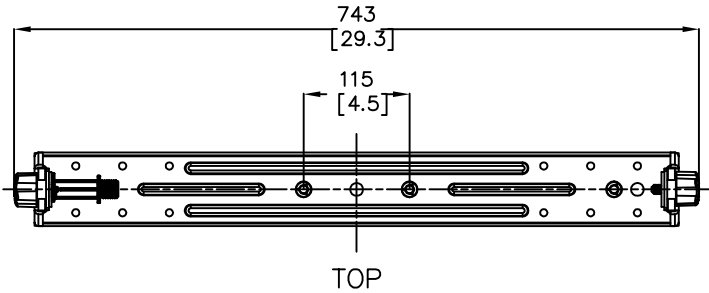


THESE DRAWINGS AND SPECIFICATIONS ARE THE PROPERTY OF JBL INCORPORATED. THEY ARE ISSUED IN STRICT CONFIDENCE AND SHALL NOT BE REPRODUCED OR USED AS THE BASIS FOR MANUFACTURE OR APPARATUS WITHOUT WRITTEN PERMISSION.

ALL MATERIAL SPECIFIED ON THIS DRAWING SHALL CONTINUALLY COMPLY WITH THE EFFECTIVE EU RoHS DIRECTIVE, CURRENTLY 2011/65/EU, INCLUDING ALL AMENDMENTS.

REVISIONS				
LTR	DESCRIPTION	DRFT	DATE	APPR
A	INITIAL RELEASE	kw	05/06/25	
B	ADD HOLE DIMENSION	kw	01/13/26	



3. WEIGHT: 2.8 KG (6 LBS).

2. FINISH: BLACK POWDER COATING.

1. MATERIAL: MAIN BRACKET: HIGH YIELD STRENGTH STEEL, T=3.0MM
ADAPTOR: ALUMINUM ALLOY, ADC12

NOTES: (UNLESS OTHERWISE SPECIFIED)

TOLERANCES	
(UNLESS OTHERWISE SPECIFIED)	
X.XX ± .063INCH	
X.X ± .125INCH	
ANGULAR TOLERANCE OF 0°±30°	
FRACTIONAL DIMENSIONS ± 1/32	
* DIMENSIONS ARE INCHES MM [INCHES]	
* ALL DIMENSIONS ARE FINISHED DIMENSIONS	
* DO NOT SCALE DRAWING	

HARMAN		JBL Professional 8500 Balboa Blvd Northridge, CA 91329 USA
TITLE CUSTOMER DRAWING:SRX915M UBH		
SIZE A	DRAWING NO. 1000387654	REV B
SCALE NTS	SHEET 1 OF 1	